



Bow Common Lane, London, E3

BUTLER & STAG



Price Guide £450,000 - £475,000
**Discover this delightful 2-
bedroom, 2-bathroom dual aspect
apartment situated in the sought-
after Bolan Apartments, Bow.**
**Offering 784 sq ft of thoughtfully
designed living space, this
property is ideal for professionals
or couples seeking a modern and
convenient lifestyle.**



Leasehold

- 784 Sq/Ft Internal Living Space
- Private Balcony
- First Floor Dual Aspect Apartment
- Chain Free
- Two Bathrooms
- Two Bedrooms
- Secure Entry System / Bicycle Storage
- Lift Service To All Levels

The open-plan living area combines the living room, dining area, and a well-appointed kitchen. This design promotes a sense of openness, making it an inviting space for socializing, entertaining, or simply relaxing. The modern kitchen is equipped with high-quality appliances and ample storage.

The apartment boasts two generously sized bedrooms, perfect for roommates, or anyone in need of extra space. Both bedrooms feature large windows, flooding the rooms with natural light, and providing a cozy atmosphere.

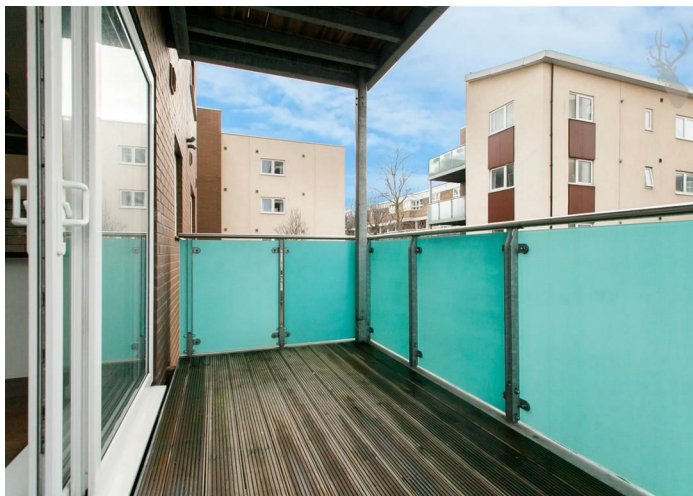
The apartment features a contemporary bathroom with sleek fixtures, a bathtub, and ample storage. It provides a comfortable and stylish space for daily routines.

The building is conveniently located near Bow's bustling high street, offering an array of shops, restaurants, and cafes. Both the Regent's Canal, and Mile End Park are just a short walk away, providing ample opportunities for outdoor activities and relaxation.

With Bow Road (District Line) and Mile End (Central / District & Hammersmith and City Line) tube stations in close proximity, you'll have excellent transport links to explore the rest of London. Bus routes also run nearby, making commuting a breeze.

The building offers secure entry, providing peace of mind and added safety.

Don't miss the opportunity to make this charming Bow apartment your own. Contact us today to arrange a viewing and experience the welcoming atmosphere and prime location of this exceptional property.

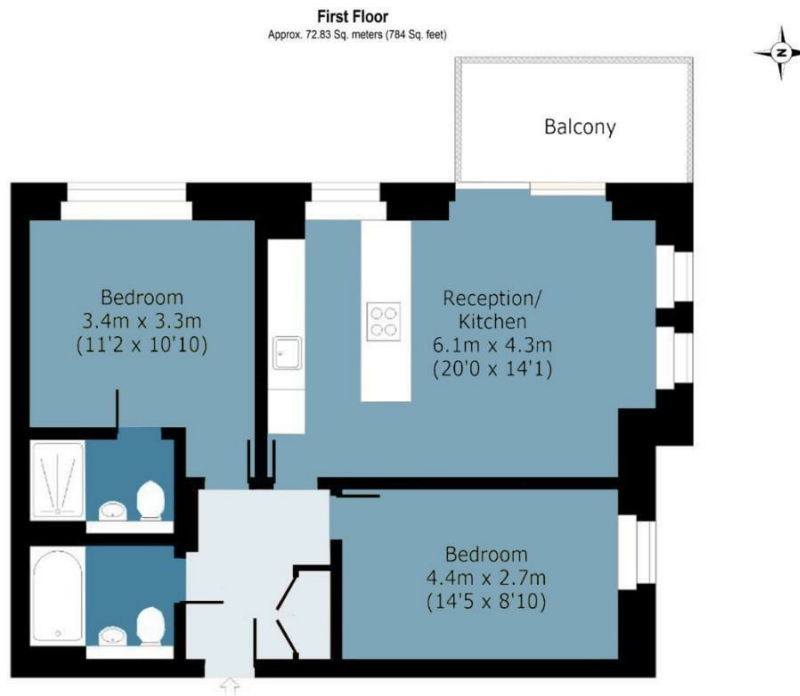




Bolan Apartments, Bow Common Lane, E3

Approx. Gross Internal Area 72.83 Sq M (784 Sq Ft)

BUTLER & STAG



Measurements are approximate and for illustration purposes only. While we do not doubt the accuracy and completeness, we advise you conduct a careful independent assessment of the property to determine monetary value.
© @modephotouk www.modephoto.co.uk

IMPORTANT NOTICE - These particulars have been prepared in good faith and they are not intended to constitute part of an offer or contract. We have not performed a structural survey on this property and the services, appliances and specific fittings have not been tested. All photographs, measurements, floor plans and distances referred to are given as a guide and should not be relied upon.

BUTLER & STAG

☎ 020 8102 1236

🏠 508 Roman Road, Bow, London, E3 5LU

✉ bow@butlerandstag.com

www.butlerandstag.uk